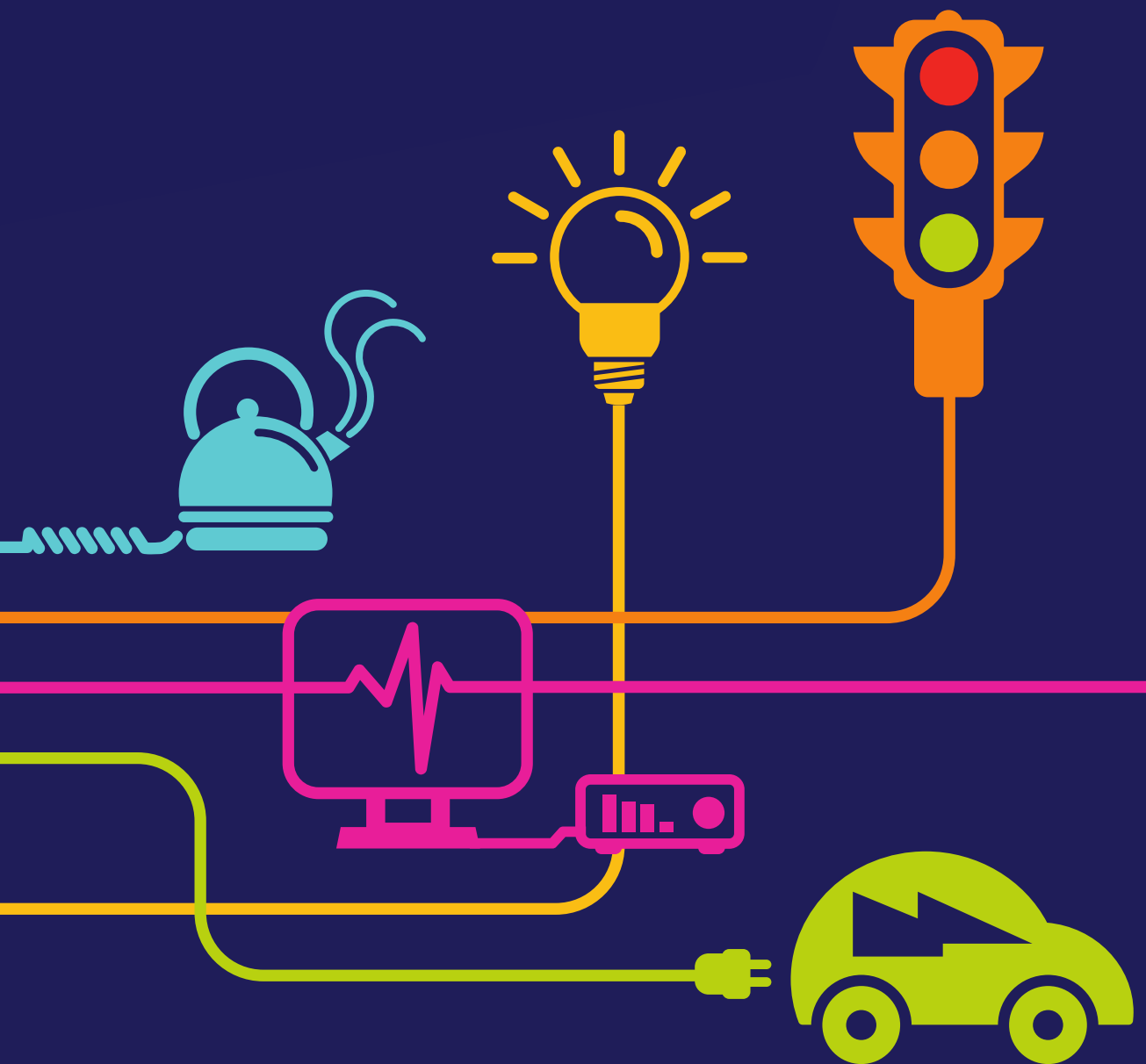


# DOCUMENT 5.17.1.6

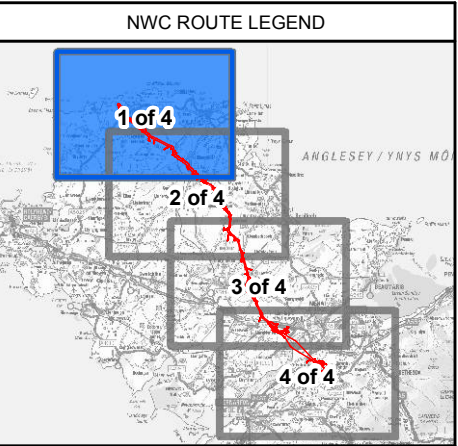
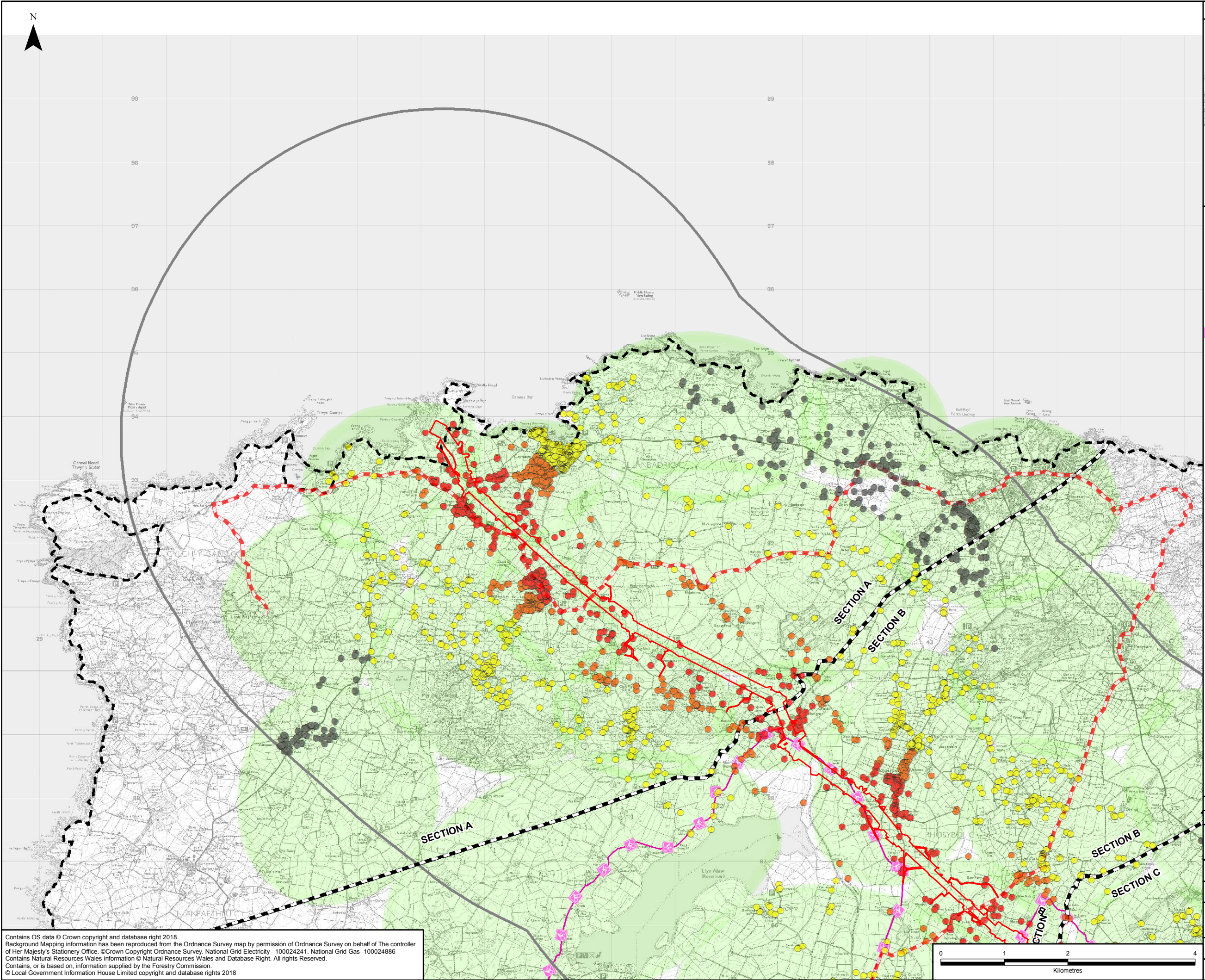
## Community Study Areas Chapter 17 – Figure 6

National Grid (North Wales Connection Project)

*Regulation 5(2)(a) including (l) and (m) of the Infrastructure Planning  
(Applications: Prescribed Forms and Procedure) Regulations 2009*







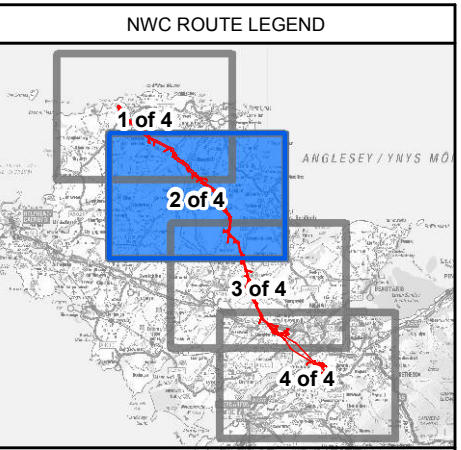
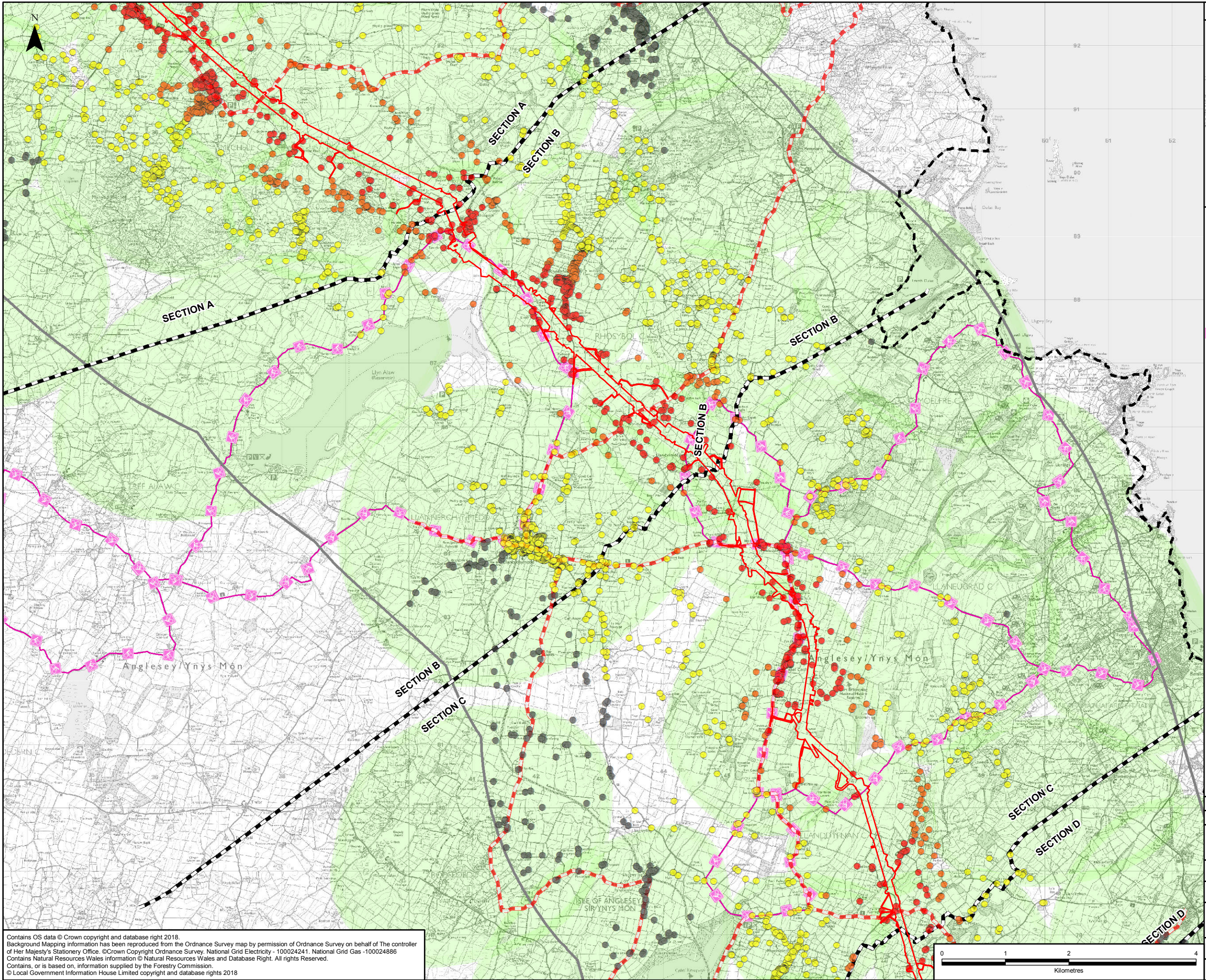
- LEGEND**
- ORDER LIMITS
  - SECTION OUTLINES
  - 5KM STUDY AREA
  - NATIONAL CYCLE ROUTES
  - WALES COASTAL PATH
  - LOCAL CYCLE ROUTES
  - RESIDENTIAL RECEPTORS (0 - 500 M)
  - RESIDENTIAL RECEPTORS (500 - 1 KM)
  - RESIDENTIAL RECEPTORS (1 KM - 3 KM)
  - RESIDENTIAL RECEPTORS (3 KM+)
  - COMMUNITIES

Contains OS data © Crown copyright and database right 2018.  
Background Mapping information has been reproduced from the Ordnance Survey map by permission of Ordnance Survey on behalf of The controller of Her Majesty's Stationery Office. © Crown Copyright Ordnance Survey, National Grid Electricity - 100024241, National Grid Gas - 100024886  
Contains Natural Resources Wales information © Natural Resources Wales and Database Right. All rights Reserved.  
Contains, or is based on, information supplied by the Forestry Commission.  
© Local Government Information House Limited copyright and database rights 2018



A	19/07/2018	ENVIRONMENTAL STATEMENT	JB	HC	EK
Rev	Date	Description	GIS	Chk	App
nationalgrid					
Scheme: NORTH WALES CONNECTION PROJECT					
Document Number: 5.17.1.6					
Document Title: FIGURE 17.6 COMMUNITY STUDY AREAS SECTION A & B					
Creator:	Date:	Checker:	Date:	Approver:	Date:
JB	19/07/2018	HC	19/07/2018	EK	19/07/2018
Document Type:	Scale:	Format:	Sheets:	Rev:	
FIGURE	1:55,000	A3	1 of 4	A	





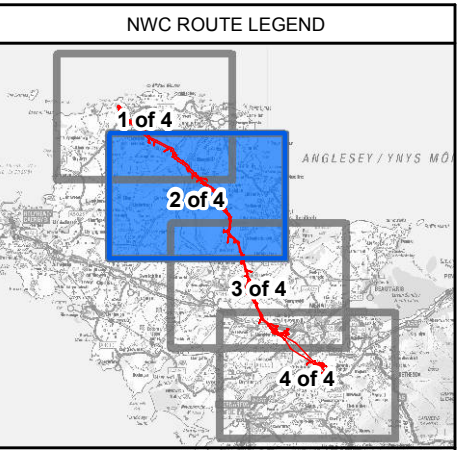
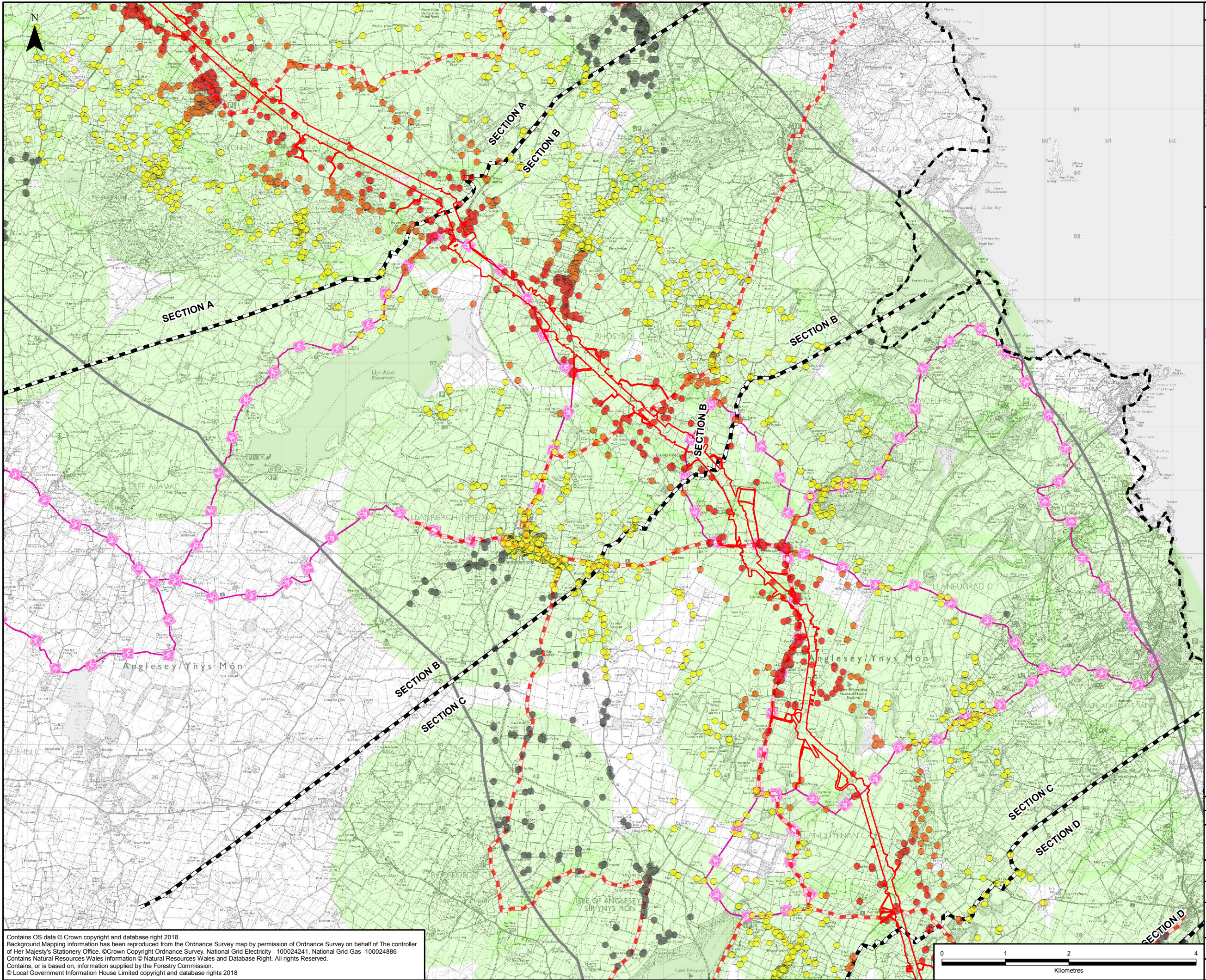
- LEGEND**
- ORDER LIMITS - OPTION A
  - SECTION OUTLINES
  - 5KM STUDY AREA
  - NATIONAL CYCLE ROUTES
  - WALES COASTAL PATH
  - LOCAL CYCLE ROUTES
  - RESIDENTIAL RECEPTORS (0 - 500 M)
  - RESIDENTIAL RECEPTORS (500 - 1 KM)
  - RESIDENTIAL RECEPTORS (1 KM - 3 KM)
  - RESIDENTIAL RECEPTORS (3 KM+)
  - COMMUNITIES

A	19/07/2018	ENVIRONMENTAL STATEMENT	JB	HC	EK
Rev	Date	Description	GIS	Chk	App

nationalgrid					
Scheme: NORTH WALES CONNECTION PROJECT					
Document Number: 5.17.1.6					
Document Title: FIGURE 17.6 COMMUNITY STUDY AREAS SECTION B & C OPTION A					
Creator:	Date:	Checker:	Date:	Approver:	Date:
JB	19/07/2018	HC	19/07/2018	EK	19/07/2018
Document Type:	Scale:	Format:	Sheets:	Rev:	
FIGURE	1:55,000	A3	2 of 4 Option A	A	

Contains OS data © Crown copyright and database right 2018.  
Background Mapping information has been reproduced from the Ordnance Survey map by permission of Ordnance Survey on behalf of The controller of Her Majesty's Stationery Office. © Crown Copyright Ordnance Survey. National Grid Gas -100024286  
Contains Natural Resources Wales information © Natural Resources Wales and Database Right. All rights Reserved.  
Contains, or is based on, information supplied by the Forestry Commission.  
© Local Government Information House Limited copyright and database rights 2018





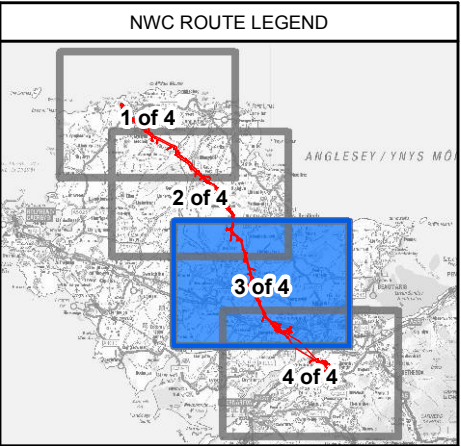
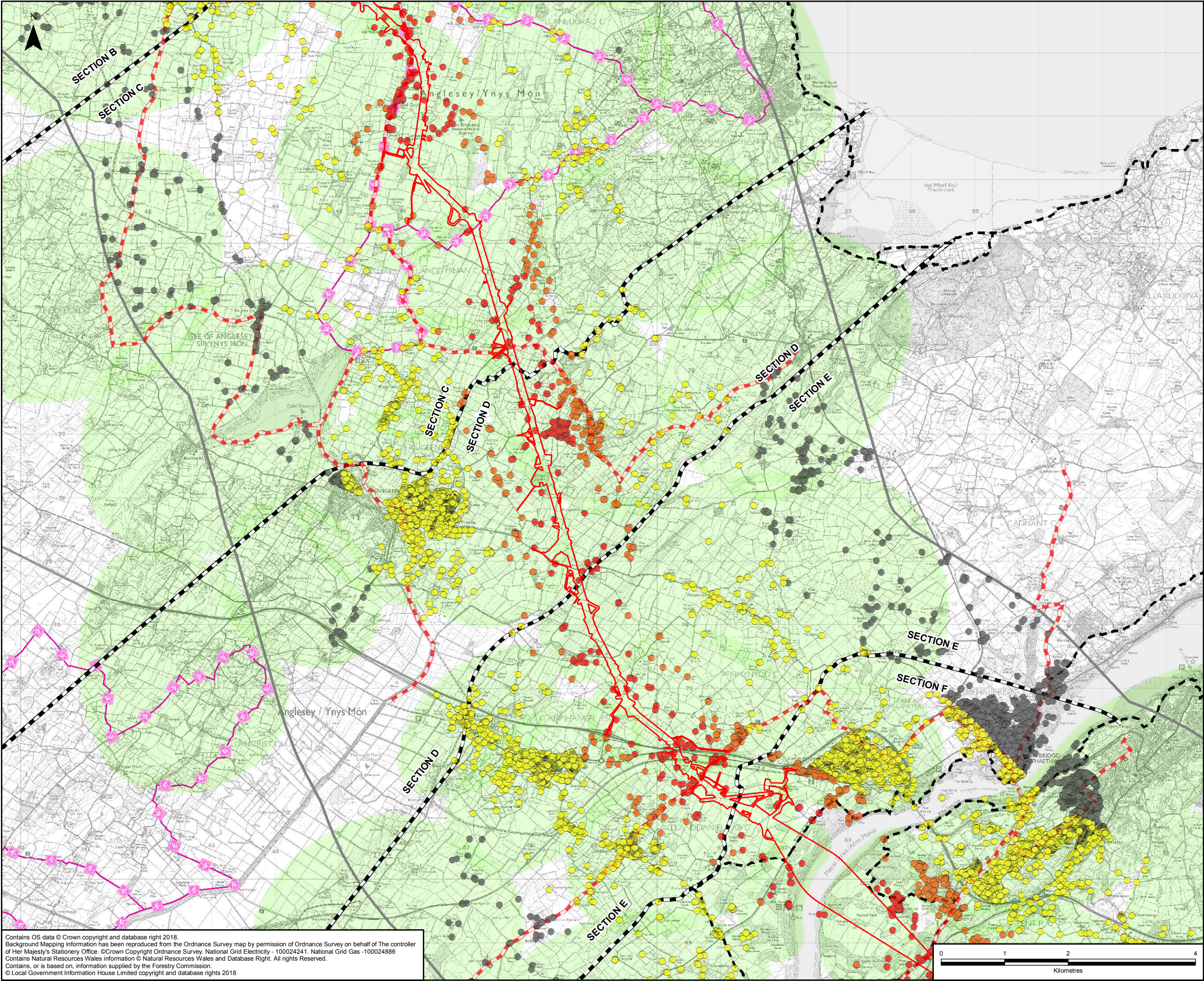
- LEGEND**
- ORDER LIMITS - OPTION B
  - SECTION OUTLINES
  - 5KM STUDY AREA
  - NATIONAL CYCLE ROUTES
  - WALES COASTAL PATH
  - LOCAL CYCLE ROUTES
  - RESIDENTIAL RECEPTORS (0 - 500 M)
  - RESIDENTIAL RECEPTORS (500 - 1 KM)
  - RESIDENTIAL RECEPTORS (1 KM - 3 KM)
  - RESIDENTIAL RECEPTORS (3 KM+)
  - COMMUNITIES

A	19/07/2018	ENVIRONMENTAL STATEMENT	JB	HC	EK
Rev	Date	Description	GIS	Chk	App

nationalgrid					
Scheme: NORTH WALES CONNECTION PROJECT					
Document Number: 5.17.1.6					
Document Title: FIGURE 17.6 COMMUNITY STUDY AREAS SECTION B & C OPTION B					
Creator:	Date:	Checker:	Date:	Approver:	Date:
JB	19/07/2018	HC	19/07/2018	EK	19/07/2018
Document Type:	Scale:	Format:	Sheets:	Rev:	
FIGURE	1:55,000	A3	2 of 4 Option B	A	

Contains OS data © Crown copyright and database right 2018.  
Background Mapping information has been reproduced from the Ordnance Survey map by permission of Ordnance Survey on behalf of The controller of Her Majesty's Stationery Office. © Crown Copyright Ordnance Survey. National Grid Gas -100024286  
Contains Natural Resources Wales information © Natural Resources Wales and Database Right. All rights Reserved.  
Contains, or is based on, information supplied by the Forestry Commission.  
© Local Government Information House Limited copyright and database rights 2018





- LEGEND**
- ORDER LIMITS - OPTION A
  - SECTION OUTLINES
  - 5KM STUDY AREA
  - NATIONAL CYCLE ROUTES
  - WALES COASTAL PATH
  - LOCAL CYCLE ROUTES
  - RESIDENTIAL RECEPTORS (0 - 500 M)
  - RESIDENTIAL RECEPTORS (500 - 1 KM)
  - RESIDENTIAL RECEPTORS (1 KM - 3 KM)
  - RESIDENTIAL RECEPTORS (3 KM+)
  - COMMUNITIES

Contains OS data © Crown copyright and database right 2018.  
Background Mapping information has been reproduced from the Ordnance Survey map by permission of Ordnance Survey on behalf of The controller of Her Majesty's Stationery Office. © Crown Copyright Ordnance Survey, National Grid Electricity - 100024241, National Grid Gas - 100024886  
Contains Natural Resources Wales information © Natural Resources Wales and Database Right. All rights Reserved.  
Contains, or is based on, information supplied by the Forestry Commission.  
© Local Government Information House Limited copyright and database rights 2018

A	19/07/2018	ENVIRONMENTAL STATEMENT	JB	HC	EK
Rev	Date	Description	GIS	Chk	App

**nationalgrid**

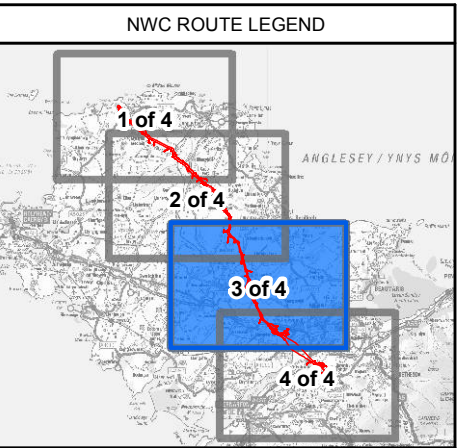
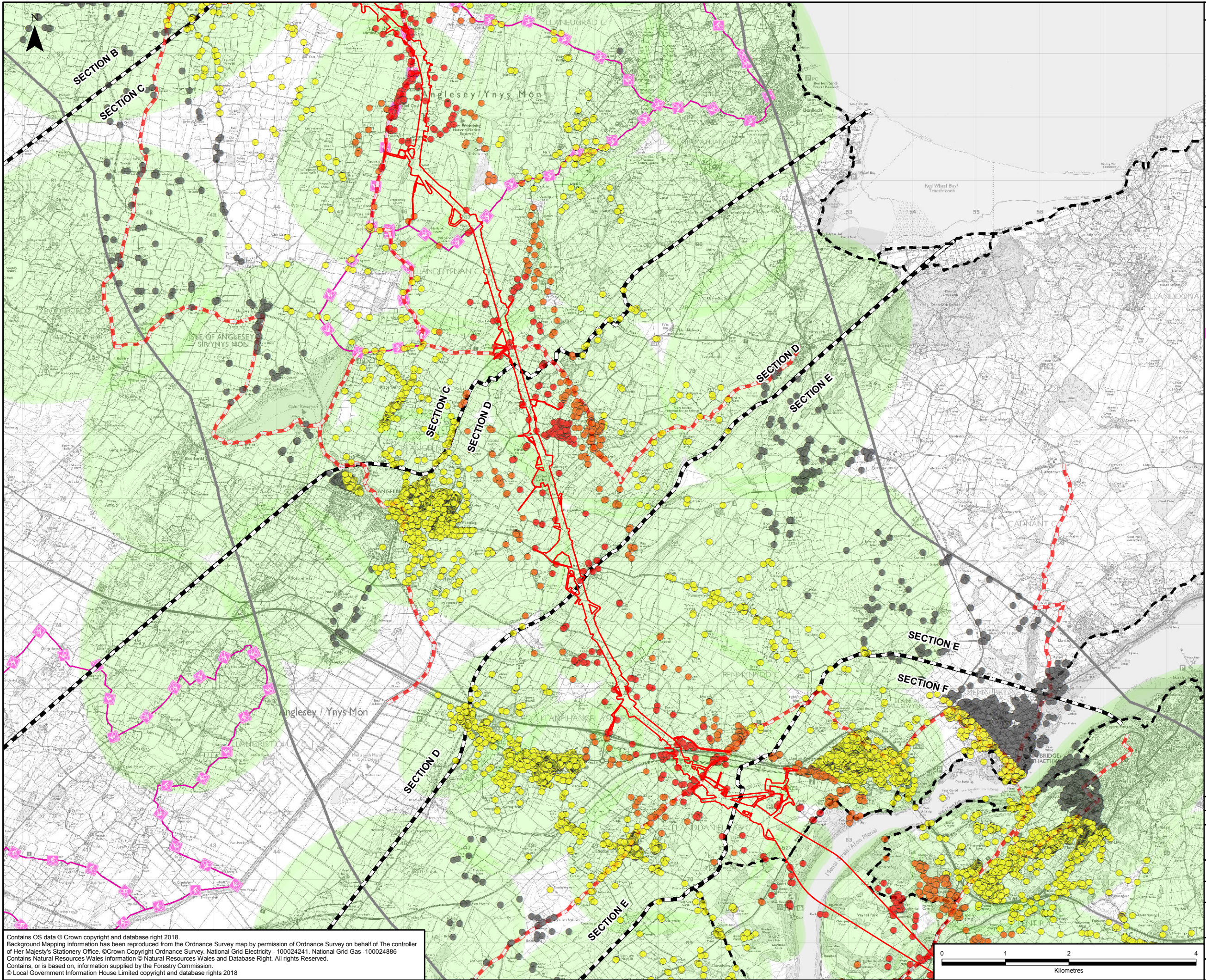
Scheme: NORTH WALES CONNECTION PROJECT

Document Number: 5.17.1.6

Document Title: FIGURE 17.6  
COMMUNITY STUDY AREAS  
SECTION C, D & E OPTION A

Creator:	Date:	Checker:	Date:	Approver:	Date:
JB	19/07/2018	HC	19/07/2018	EK	19/07/2018
Document Type:	Scale:	Format:	Sheets:	Rev:	
FIGURE	1:55,000	A3	3 of 4 Option A	A	



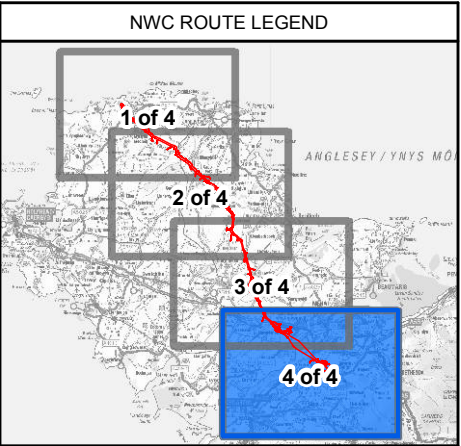
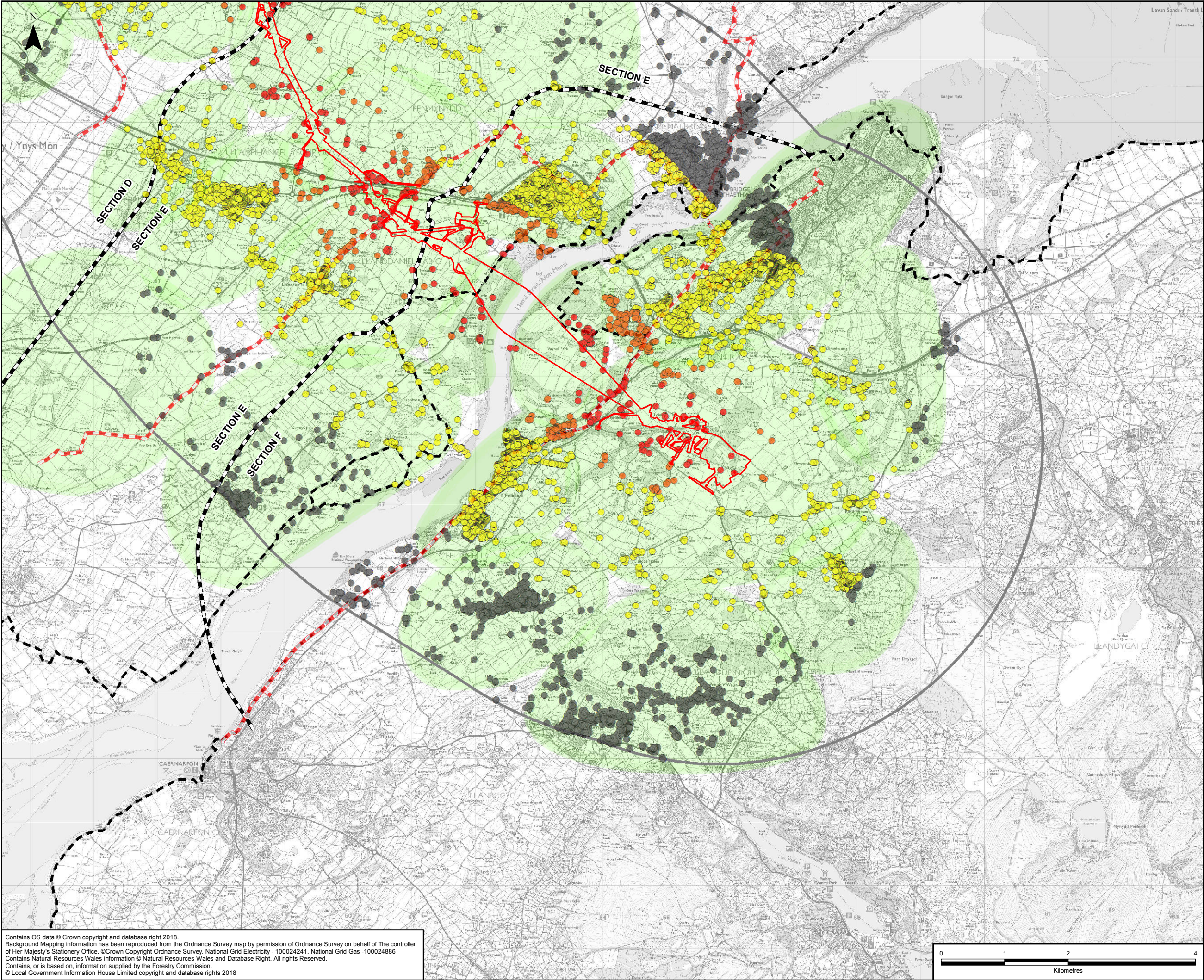


- LEGEND**
- ORDER LIMITS - OPTION B
  - SECTION OUTLINES
  - 5KM STUDY AREA
  - NATIONAL CYCLE ROUTES
  - WALES COASTAL PATH
  - LOCAL CYCLE ROUTES
  - RESIDENTIAL RECEPTORS (0 - 500 M)
  - RESIDENTIAL RECEPTORS (500 - 1 KM)
  - RESIDENTIAL RECEPTORS (1 KM - 3 KM)
  - RESIDENTIAL RECEPTORS (3 KM+)
  - COMMUNITIES

Contains OS data © Crown copyright and database right 2018.  
Background Mapping information has been reproduced from the Ordnance Survey map by permission of Ordnance Survey on behalf of The controller of Her Majesty's Stationery Office. © Crown Copyright Ordnance Survey, National Grid Electricity - 100024241, National Grid Gas - 100024886  
Contains Natural Resources Wales information © Natural Resources Wales and Database Right. All rights Reserved.  
Contains, or is based on, information supplied by the Forestry Commission.  
© Local Government Information House Limited copyright and database rights 2018

A	19/07/2018	ENVIRONMENTAL STATEMENT	JB	HC	EK
Rev	Date	Description	GIS	Chk	App
nationalgrid					
Scheme: NORTH WALES CONNECTION PROJECT					
Document Number: 5.17.1.6					
Document Title: FIGURE 17.6 COMMUNITY STUDY AREAS SECTION C, D & E OPTION B					
Creator: JB	Date: 19/07/2018	Checker: HC	Date: 19/07/2018	Approver: EK	Date: 19/07/2018
Document Type: FIGURE	Scale: 1:55,000	Format: A3	Sheets: 3 of 4 Option B	Rev: A	





LEGEND	
	ORDER LIMITS
	SECTION OUTLINES
	5KM STUDY AREA
	NATIONAL CYCLE ROUTES
	WALES COASTAL PATH
	LOCAL CYCLE ROUTES
	RESIDENTIAL RECEPTORS (0 - 500 M)
	RESIDENTIAL RECEPTORS (500 - 1 KM)
	RESIDENTIAL RECEPTORS (1 KM - 3 KM)
	RESIDENTIAL RECEPTORS (3 KM+)
	COMMUNITIES

A	19/07/2018	ENVIRONMENTAL STATEMENT	JB	HC	EK
Rev	Date	Description	GIS	Chk	App

Scheme: NORTH WALES CONNECTION PROJECT					
Document Number: 5.17.1.6					
Document Title: FIGURE 17.6 COMMUNITY STUDY AREAS SECTION E & F					
Creator:	Date:	Checker:	Date:	Approver:	Date:
JB	19/07/2018	HC	19/07/2018	EK	19/07/2018
Document Type:	Scale:	Format:	Sheets:	Rev:	
FIGURE	1:55,000	A3	4 of 4	A	

Contains OS data © Crown copyright and database right 2018.  
Background Mapping information has been reproduced from the Ordnance Survey map by permission of Ordnance Survey on behalf of The controller of Her Majesty's Stationery Office. © Crown Copyright Ordnance Survey. National Grid Electricity - 100024241, National Grid Gas - 100024886  
Contains Natural Resources Wales information © Natural Resources Wales and Database Right. All rights Reserved.  
Contains, or is based on, information supplied by the Forestry Commission.  
© Local Government Information House Limited copyright and database rights 2018